

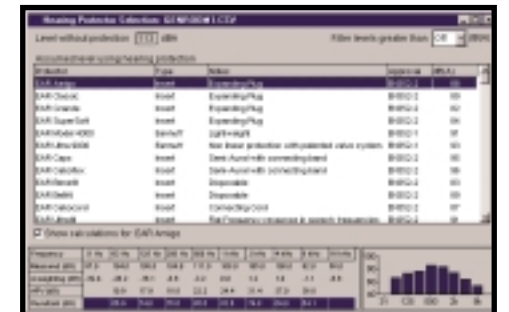
ANALYZER Software

ANALYZER Software

HEARING PROTECTOR SELECTION REPORT

If Octave Band measurements have been made and downloaded, the Hearing Protector Selection Report can be accessed.

Analyzer will calculate the noise levels "at the ear" before and after all of the hearing protectors in the database are applied. The Hearing Protector Selection Report can also be asked to remove all protectors that do not reduce the measured noise levels below a preset threshold, such as 85dB(A) for example.



Analyzer is supplied with a database of hearing protectors. The database of hearing protectors can also be updated with new information as and when required.

The hearing protection calculations performed by this software are carried out in accordance with methods defined in the BS EN 458 : 1994 "Hearing protectors - Recommendations for selection, use, care and maintenance - Guidance document".

Analyzer displays the calculated values, and either the entire list or the information for a selected product can be printed or exported to other applications.

PRODUCT INFO.

Analyzer is suitable for PC's running Microsoft Windows.

Analyzer is supplied on CD-ROM, with a full installation program, and comprehensive on line help, which gives details of the options and functions of the software, along with details of the calculations used in the Hearing Protector Selection Report.

Analyzer is supplied as standard with the Quantifier Sound Level Meter, or can be purchased as an individual item with the product code SW:ANALYZER.

Please contact NoiseMeters B.V. for further information.

NoiseMeters Limited
 West End, Muston, N. Yorks
 YO14 0ES, England
 UK: 0845 680 0312
 USA: 888-206-4377
 e-mail (sales):
sales@noisemeters.com
 e-mail (technical support):
support@noisemeters.com
 web site: www.noisemeters.com

OVERVIEW

Analyzer is an advanced Windows-based program that allows information to be downloaded, viewed and printed, from the Quantifier Series Sound Level Meter.

Downloaded measurements are stored in "folders" with each different measurement type indicated by an icon, as well as the time and date of the measurement and any comments that have been entered.

Analyzer allows each measurement to be viewed either as an individual file, or in a table format that allows information to be compared and listed.

At any time, measurements can be printed or exported into other programs such as Spreadsheets or Wordprocessors for further reporting.

